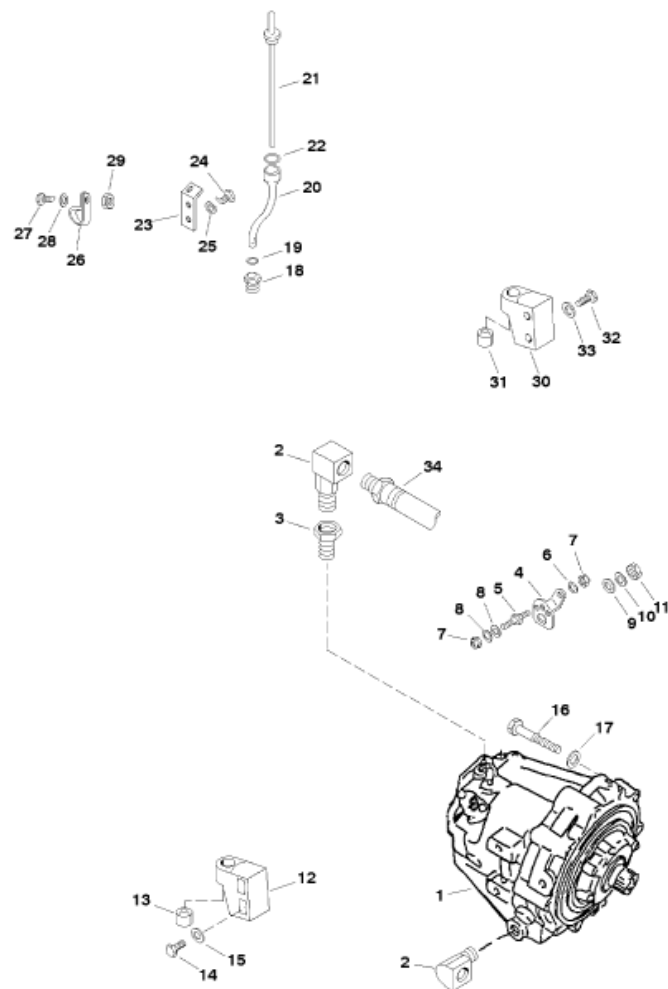


Parts List



Ref	Class	Part	Description	Qty	Comment	Footnote
1		14750A 1	TRANSMISSION ASSEMBLY	1		
2	22	47629	ELBOW	2		
3	22	88517	FITTING	1		
4		12128	LEVER-Shift	1		
5	16	63335	STUD	1		
6	12	39143	WASHER	1		
7	11	20361	NUT (.250-28)	2		
8	12	29245	WASHER	2		
9	12	20722	WASHER	1		
10	13	39107	LOCKWASHER (.312)	1		
11	11	22053	NUT (.312-24)	1		
12		47334A 2	BRACKET ASSEMBLY-Mounting (E	1		
13		35852	MOUNT	1		
14	10	47462	SCREW (.437-14 x 1.250)	2		
15	13	32993	LOCKWASHER (.437)	2		
16	10	60179	SCREW (.437-14 x 3.500)	6		
17	13	32993	LOCKWASHER (.437)	6		
18		48461	ADAPTOR-Dipstick Tube to Transf	1		
19	25	48462	O RING	1		
20		48463	TUBE-Dipstick	1		
21		48464	DIPSTICK	1		
22	25	35276	O RING	1		
23		48466	BRACKET-Dipstick Tube	1		
24	10	32417	SCREW (.250-28 x .625)	2		
25	13	26992	LOCKWASHER (.250)	2		
26	54	67015	CLAMP	1		
27	10	60300	SCREW (.250-28 x .750)	1		
28	12	29245	WASHER	2		
29	11	20361	NUT (.250-28)	1		
30		47340A 1	BRACKET ASSEMBLY-Mounting (F	1		
31		35852	MOUNT	1		
32	10	47462	SCREW (.437-14 x 1.250)	2		
33	13	32993	LOCKWASHER (.437)	2		
34	32	47516 6	HOSE ASSEMBLY (30.00 In.)	2		